

PragmaEdge

OrchestrAI

Turning retail forecasts into shelf-level results

AI-POWERED SUPPLY CHAIN OPTIMIZATION FOR US RETAIL

The Question Worth Asking

You've invested in forecasting. Does your margin actually move when the forecast improves?

You've bought the planning tools and hired the planners. But here is the harder question: where does that forecast turn into margin — and where does it slip away?

We help retailers find where forecast value is gained, and where it's quietly lost.




Ask your operations team where the forecast disconnects from execution on Day 2.

Why This Comes From Us

We don't sell another system. We make the ones you already run work together.

Our vantage point is integration — connecting planning, ERP, WMS, and ecommerce. We specialize inside complex retail supply chains: tackling markdowns, managing peak-season volatility, and orchestrating ship-from-store.

 AWS Ecosystem

 SAP Native

 Oracle Cloud

 MS Dynamics

500+
Enterprise integrations built and managed globally

Certified
Production integrations for SAP, Oracle, Microsoft, & AWS

50+
Major retail and supply chain operations optimized

A Bad Forecast Charges Twice

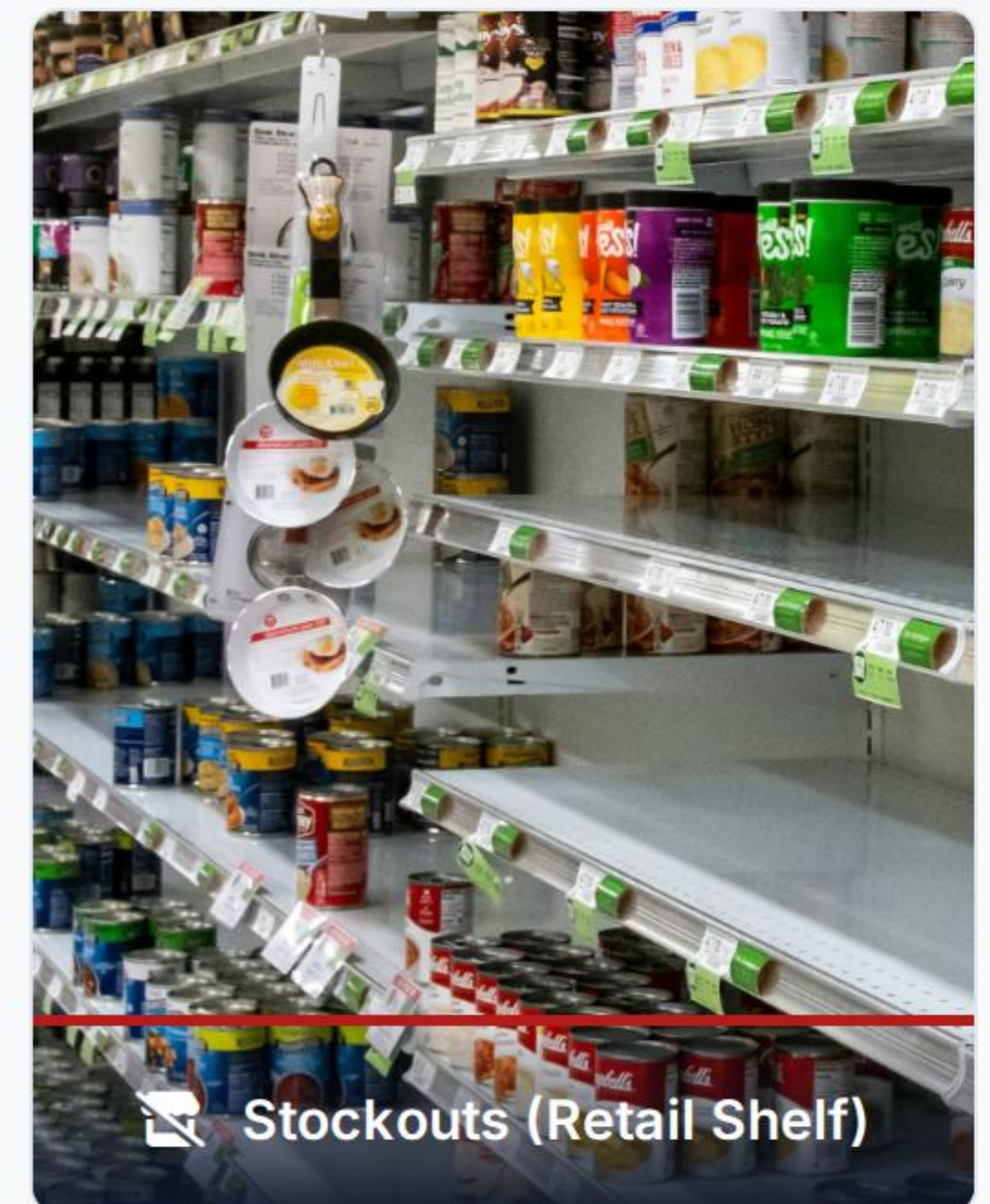
Once in dead stock, once in lost sales.

- ✓ Cash remains frozen in slow movers and markdowns in one distribution center.
- ✓ Stockouts strike your best-margin SKUs on retail store shelves.
- ✓ Tariffs, omni-channel complexity, and thinning margins make execution harder every single quarter.

Most teams only count visible overstock. The lost sales are significantly larger — and invisible.

Overstocked warehouse aisles

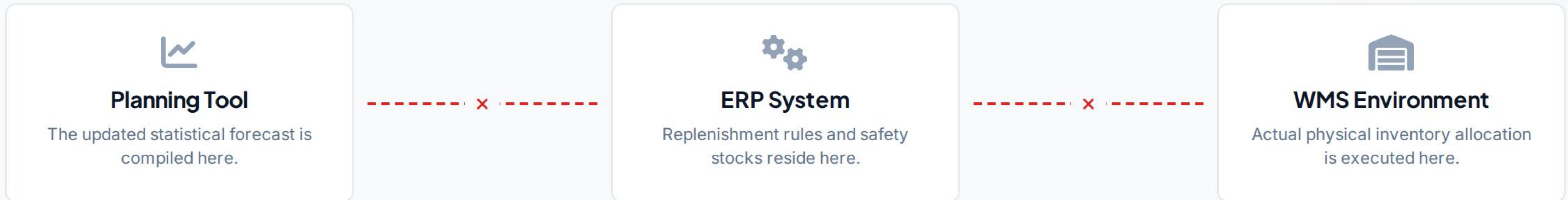
Dead Inventory (DC)



Stockouts (Retail Shelf)

Where the Value Leaks

Supply chains break at the points of handoff. When systems run on separate schedules and rules, your best planning effort stalls before impacting execution.



The forecast isn't the weak link. The system handoff is.

Active Replenishment Flow

OrchestrAI connects planning → ERP → WMS into one seamless flow. It reads data dynamically using secure, governed APIs and delivers immediate SKU- and store-level recommendations back into your existing replenishment workflow.



 **INTEGRATED & GOVERNED BY PRAGMA EDGE ORCHESTRAI LAYER**

No rip-and-replace. Your core systems and final human control remain completely intact.

One retailer freed millions — without replacing a single system.

A ~\$900M omnichannel apparel brand was improving forecasts on paper, but store margins were still slipping. The structural gap was in cross-system execution, not model prediction.

Working Capital Freed

~\$3M (17% less excess)

Top-SKU Stockout Rate

Decreased: 12% → 7%

Deployment Timeline

2 Quarters · 0 Replacements

"We didn't need a new planning system. We simply needed our transactional systems to talk to each other in real-time."

— VP, Supply Chain Strategy

**Illustrative example based on actual retail integrations*



Start by Knowing Where You Stand

Evaluate your architecture. Our free, non-intrusive **Supply Chain AI Readiness Check** measures structural connectivity and benchmarks your orchestration capabilities against top-performing peer retail networks.



Readiness Check

10-minute diagnostic profiling connectivity.



Discovery

System mapping and opportunity sizing.



Phased Pilot

Controlled deployment on targeted SKUs / DCs.



Full Scale

Enterprise rollout with secure workflows.

Zero direct database sharing or complex software commitments are required to compile the benchmarks.

PragmaEdge

See where your shelf stacks up.

Take our complimentary 10-minute Supply Chain AI Readiness check.

Begin Readiness Check →

 pragmaedge.com

 info@pragmaedge.com

 +1 (904) 999-1008